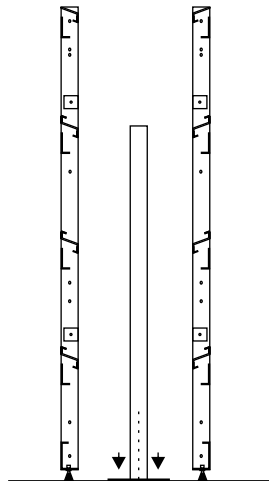


S.02-A
SET-UP INSTRUCTION SHOP SYSTEM / LOW WALL UNITS

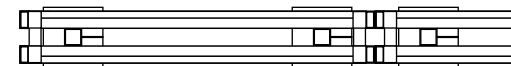
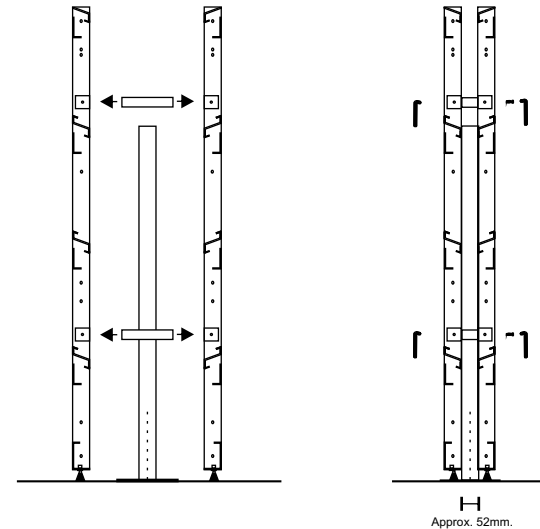


1 POSITION OF FLOOR STANDER TO CONSTRUCTION FLOOR




- By assembling of wall unit type 1002/136 or 1002/102 two-sided back to back with freestanding position use type 1005 floorstander.
- Floorstander bolts to the floor. Dimension and type of bolt are depending of the nature of the floor. The bolt have to be strong and take a large weight.
For movable position the floorstander bolts to floorplate type 1005/P or podium type 1108/P-104, 1108/P-155 or 1108/P-208
- There goes 2 floorstander per each two-sided wall-unit placed close to the sides of the wall-unit. Please note! This position are based of an even hanging-disposition of the products.

2 FIXING WALL-UNITS BY SECTIONAL FITTING CODE 1000/A



- When fixing wall-unit use 4 pcs of sectional fittings L11cm. per each two-sided wall-units. There must be a distance between the 2 wall-units of min.52mm. to fit the topplate fitting 1002/A, topplate 1102/A and the end-plate 1022/136 or 1022/102.

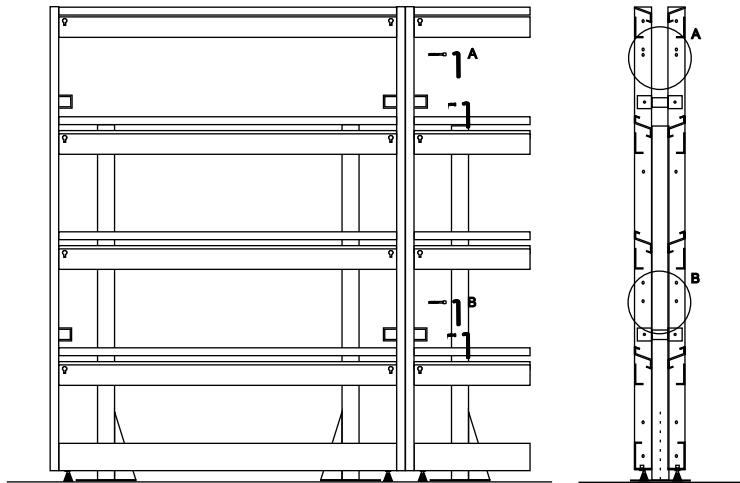
1 x 8 x 

S.02-A

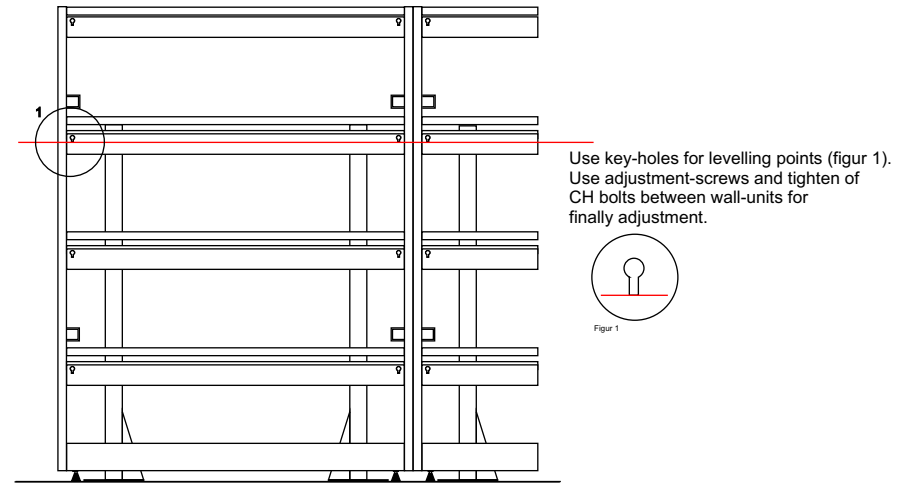
PRÆSTEGAARD
shop
system dk




3 FIXING OF WALL-UNIT TO WALL-UNIT



4 ADJUSTMENT OF WALL-UNIT

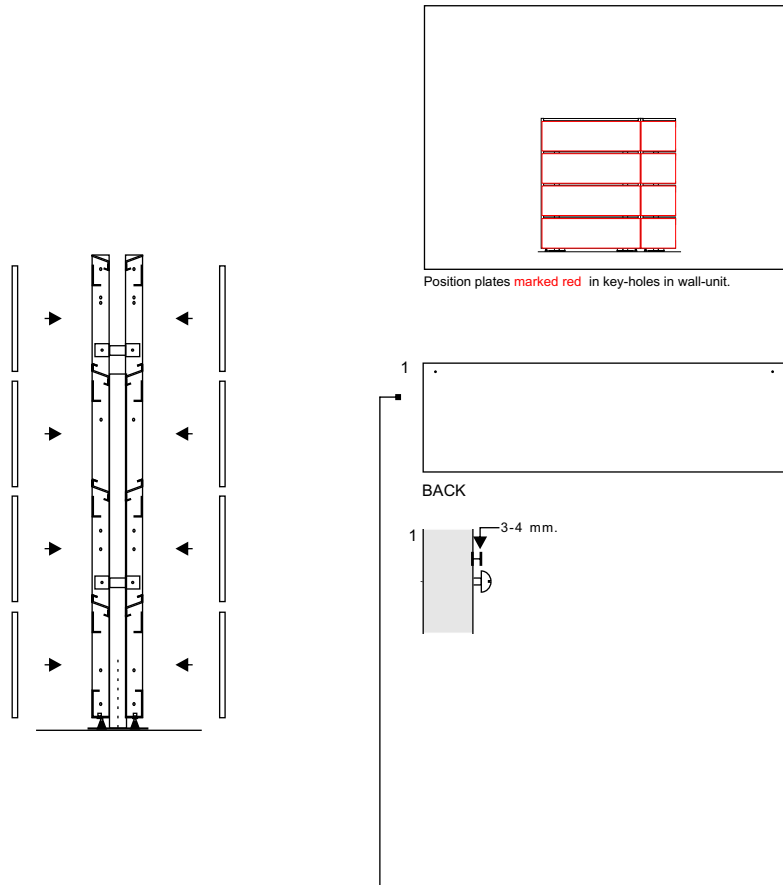


- Use key-holes for levelling points (figur 1).
Use adjustment-screws and tighten of CH bolts between wall-units for finally adjustment.

1 x  8 x  4 x  4 x 

1 x 

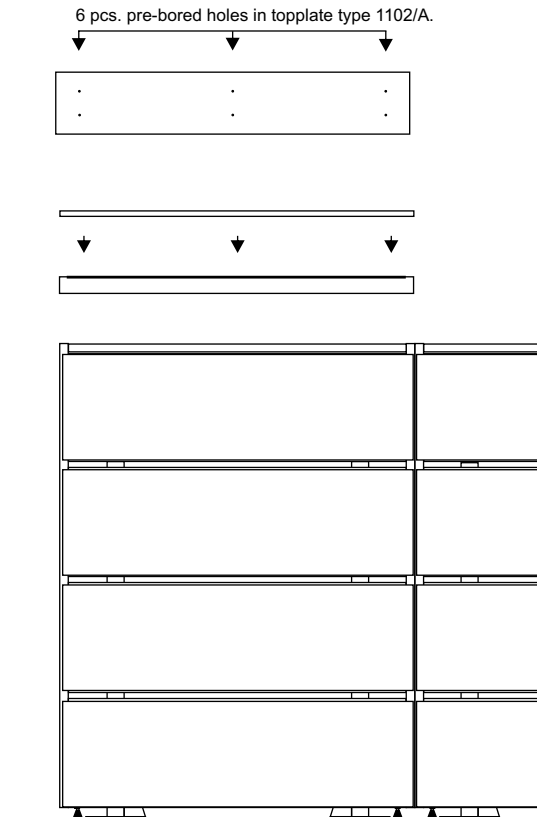
5 FIXING OF PLATES



- Place woodscrews in 2 pre-bored holes per plate.
- Fixing of plates by woodscrews in key-holes in wall-unit.

16 x

6 FIXING OF TOPPLATE CODE 1102/A + TOPPLATE FITTING 1002/A

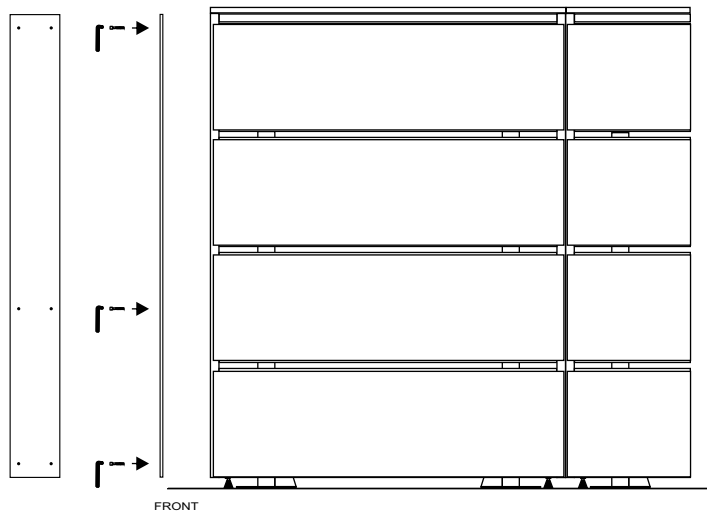


6 x



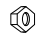
5 FIXING OF PLATES



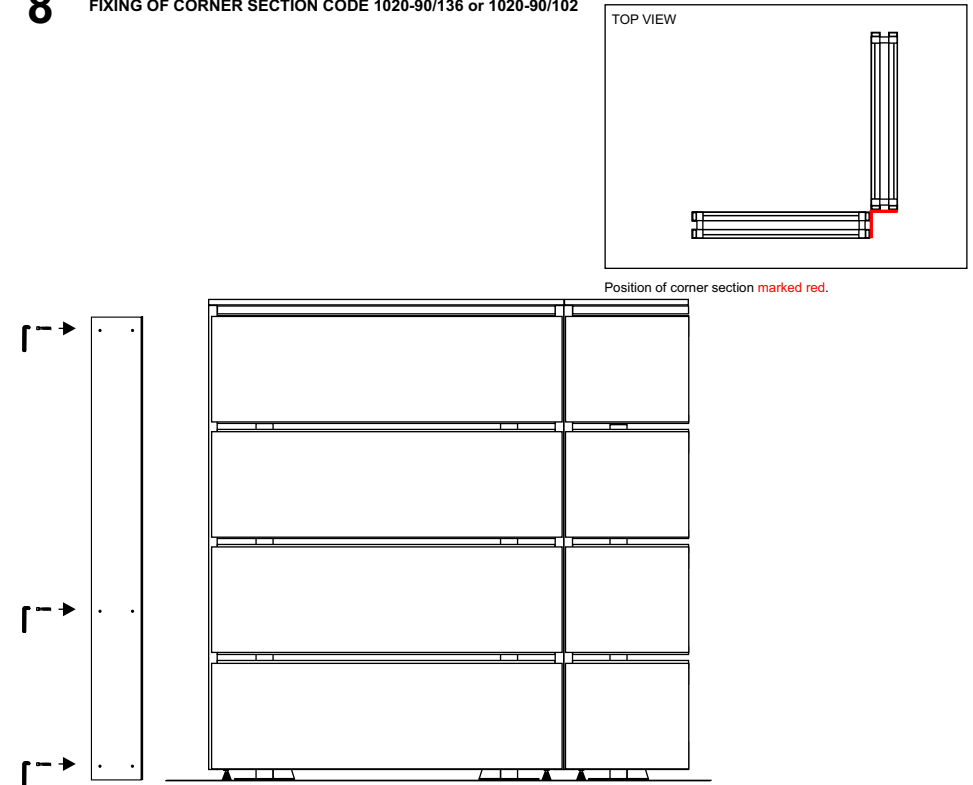
7 FIXING OF END-PLATE CODE 1022/136 or 1022/102





- End-plate code 1022/136 or 1022/102 fixed to wall-unit with 6 bolts incl. nuts per end-plate.

1 x  6 x  6 x 

8 FIXING OF CORNER SECTION CODE 1020-90/136 or 1020-90/102



- Corner section code 1020-90/136 or 1020-90/102 fixed to 2 wall-units with 12 bolts incl. nuts.

1 x  12 x  12 x 